



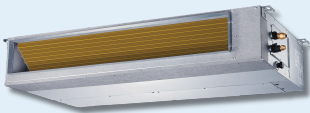
## High Wall

- Capacities: 9k, 12k, 18k, 24k BTU
- SEER2 up to 24.6 and COP2 up to 3.81
- A2L sensor included



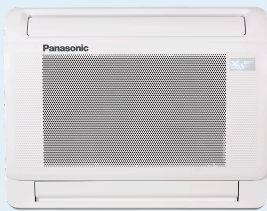
## 4-Way Cassette

- Capacities: 9k, 12k, 18k, 24k BTU
- SEER2 up to 22 and COP2 up to 4
- 1-100% fan setting and humidity control
- A2L sensor included



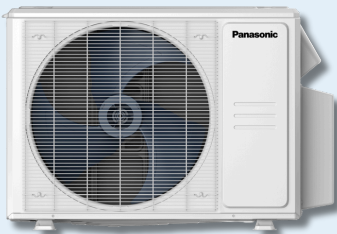
## Slim Duct

- Capacities: 9k, 12k, 18k, 24k BTU
- SEER2 up to 20 and COP2 up to 3.9
- Static pressure (9k/12k @ 0.4 | 18k/24k @ 0.8)
- A2L sensor included



## Floor Console

- Capacity: 12k BTU
- SEER2 is 24.6 and COP2 is 3.9
- Top/Bottom discharge and humidity control
- A2L sensor included



## Single-Zone & Multi-Zone (up to 6 Zones) Outdoor Unit

- Single-Zone capacities: 9k, 12k, 18k, 24k BTU
- Multi-Zone capacities: 18k, 27k, 36k, 48k BTU
- SEER2 up to 23.1 and COP2 up to 3.8
- -25°C (-13°F) cold climate heating operation
- Inverter technology
- A2L shut-off valve included



**Wired\* and Wireless  
remote control included**

\*Included with 4-Way Cassette and Slim Duct;  
Optional for High Wall and Floor Console

**R454B**



# Project series

Scan for more info



## High Wall

Indoor Unit Model Number		CS-YM9CKUW	CS-YM12CKUW	CS-YM18CKUW	CS-YM24CKUW
Outdoor Unit Model Number		CU-YM9CBUC	CU-YM12CBUC	CU-YM18CBUC	CU-YM24CBUC
Cooling Capacity	Btu/h	9000	12000	18000	24000
SEER2	Btu/h/W	24.6	23.1	24.0	23.5
EER2	Btu/h/W	14.7	12.2	13.5	13.0
Heating Capacity	Btu/h	10000	12000	18000	25000
HSPF2-4/5	Btu/h/W	13.0 / 9.5	11.5 / 8.5	11.1 / 8.3	10.0 / 7.7
COP	W/W	3.66	3.69	3.81	3.08
Indoor Unit Dimension	inch (HxWxD)	11-5/8 x 31-9/16 x 7-7/8	11-5/8 x 31-9/16 x 7-7/8	13-1/4 x 42-5/8 x 9-3/16	13-1/4 x 42-5/8 x 9-3/16
Outdoor Unit Dimension	inch (HxWxD)	21-7/8 x 30-1/8 x 11-15/16	21-7/8 x 30-1/8 x 11-15/16	26-1/2 x 35-1/16 x 13-7/16	31-7/8 x 37-1/4 x 16-1/8

## 4-Way Cassette

Indoor Unit Model Number		CS-YM9CB4UW	CS-YM12CB4UW	CS-YM18CB4UW	CS-YM24CL4UW
Outdoor Unit Model Number		CU-YM9CBUC	CU-YM12CBUC	CU-YM18CBUC	CU-YM24CBUC
Cooling Capacity	Btu/h	9000	12000	16800	24000
SEER2	Btu/h/W	21.6	21.1	20.7	22
EER2	Btu/h/W	14.3	12.5	12.5	12.0
Heating Capacity	Btu/h	10000	12000	18000	25000
HSPF2-4/5	Btu/h/W	11.3 / 8.8	10.4 / 7.9	11.4 / 8.5	10.5 / 8.1
COP	W/W	4.00	3.55	3.36	3.20
Indoor Unit Dimension	inch (HxWxD)	9-5/8 x 22-7/16 x 22-7/16	9-5/8 x 22-7/16 x 22-7/16	9-5/8 x 22-7/16 x 22-7/16	8-1/16 x 32-11/16 x 32-11/16
Outdoor Unit Dimension	inch (HxWxD)	21-7/8 x 30-1/8 x 11-15/16	21-7/8 x 30-1/8 x 11-15/16	26-1/2 x 35-1/16 x 13-7/16	31-7/8 x 37-1/4 x 16-1/8

## Slim Duct

Indoor Unit Model Number		CS-YM9CD2UW	CS-YM12CD2UW	CS-YM18CD1UW	CS-YM24CD1UW
Outdoor Unit Model Number		CU-YM9CBUC	CU-YM12CBUC	CU-YM18CBUC	CU-YM24CBUC
Cooling Capacity	Btu/h	9000	11500	17500	24000
SEER2	Btu/h/W	19.5	19.0	20.0	19.0
EER2	Btu/h/W	12.8	11.7	13.3	12.5
Heating Capacity	Btu/h	10000	12000	20000	25000
HSPF2-4/5	Btu/h/W	11.0 / 8.8	10.2 / 8.0	11.3 / 8.8	11.0 / 8.5
COP	W/W	3.66	3.42	3.90	3.64
Indoor Unit Dimension	inch (HxWxD)	7-7/8 x 27-9/16 x 19-15/16	7-7/8 x 27-9/16 x 19-15/16	9-5/8 x 39-3/8 x 29-1/2	9-5/8 x 39-3/8 x 29-1/2
Outdoor Unit Dimension	inch (HxWxD)	21-7/8 x 30-1/8 x 11-15/16	21-7/8 x 30-1/8 x 11-15/16	26-1/2 x 35-1/16 x 13-7/16	31-7/8 x 37-1/4 x 16-1/8

## Floor Console

Indoor Unit Model Number		CS-YM12CFUW		
Outdoor Unit Model Number				
Cooling Capacity	Btu/h	12000		
SEER2	Btu/h/W	24.6		
EER2	Btu/h/W	12.7		
Heating Capacity	Btu/h	12000		
HSPF2-4/5	Btu/h/W	11.0 / 8.2		
COP	W/W	3.90		
Indoor Unit Dimension	inch (HxWxD)	24-7/16 x 31-1/4 x 7-7/8		
Outdoor Unit Dimension	inch (HxWxD)	21-7/8 x 30-1/8 x 11-15/16		

## Multi-Zone Outdoor Unit

Outdoor Unit Model Number		CU-3YM18CBUC	CU-4YM27CBUC	CU-5YM36CBUC	CU-6YM48CBUC
Cooling Capacity	Btu/h	18000	26000	35000	45000
SEER2	Btu/h/W	23	23	23.1	21.3
EER2	Btu/h/W	12.5	12.2	12	11.7
Heating Capacity	Btu/h	19000	27000	37000	48000
HSPF2-4/5	Btu/h/W	10 / 7.7	9.5 / 7.1	10 / 7.5	10 / 7.7
COP	W/W	3.8	3.6	3.5	3.6
Outdoor Unit Dimension	inch (HxWxD)	26-1/2 x 35-1/16 x 13-7/16	31-7/8 x 37-1/4 x 16-1/8	31-7/8 x 37-1/4 x 16-1/8	52-1/2 x 37-1/2 x 16-5/16

**Power Supply** 208/230V,60Hz,1Ph

Specifications are subject to change without notice.  
Always refer to the official service and installation manuals for final specifications.

# Panasonic